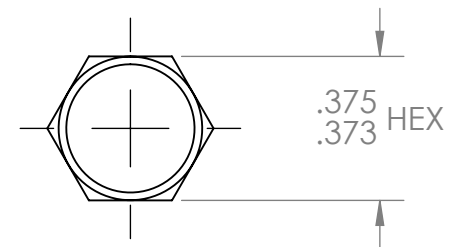
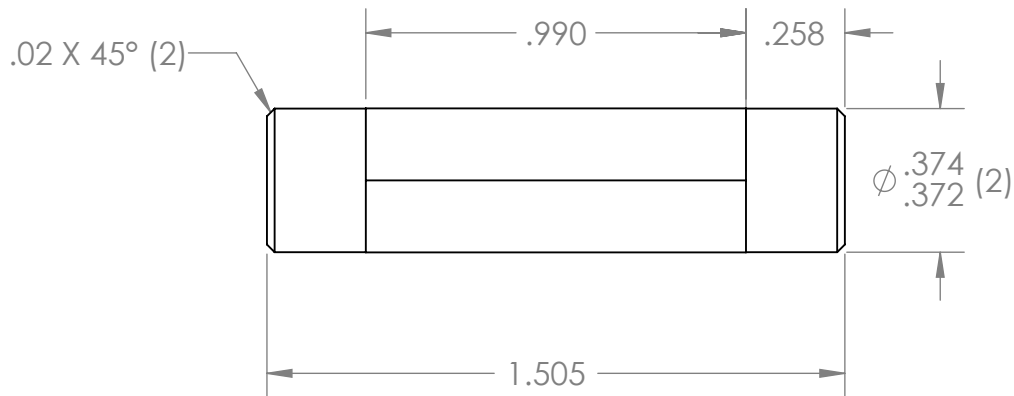
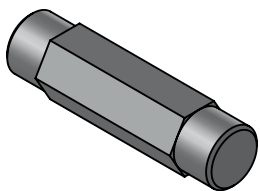



REVISION HISTORY			
REV.	DESCRIPTION	DATE	DRAWN BY
1	ORIGINAL PRINT	8/23/2013	D. BLAU
2	UPDATED TO AMDS-1	6/11/2018	A. MILLS
3	REMOVED DETAIL VIEW, CLEANED UP	4/30/2020	N. LAWRENCE



*** SEE CAD FOR ADDITIONAL TOOLPATH INFO***



UNLESS OTHERWISE SPECIFIED:		COMMENTS:				
DIMENSIONS ARE IN INCHES		DUAL DIMENSIONS ARE IN MILLIMETERS.				
TOLERANCES:		BREAK ALL SHARP EDGES		TITLE:		
FRACTIONAL	±1/16			TOUGHBOX INTERNAL		
ANGULAR: MACH	±1°			HEX SHAFT		
ANGULAR: BEND	±5°			SIZE	DWG. NO.	REV
ONE PLACE DECIMAL	±0.1			A	am-0152	3
TWO PLACE DECIMAL	±0.01			SCALE: 2:1 WEIGHT:		
THREE PLACE DECIMAL	±0.005			SHEET 1 OF 1		
FOUR PLACE DECIMAL	±0.0005					
MATERIAL		CHECKED	NAME	DATE		
1018, 1215, 12L14 STEEL		ENG APPR.	NM	4/30/20		
FINISH DEBURRED		MFG APPR.				
ZINC PLATED		Q.A.				
DO NOT SCALE DRAWING						